

ø67 x H30 / 60 (mm)
Rth 3.13 - 2.27 °C/W
Power Pd 16 - 22 W

[MORE PRODUCT DETAILS](#)

CoolStar® 67 Designer series Citizen LED Star Cooler ø67mm

Mounting Instruction

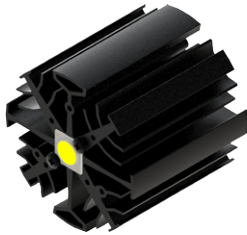
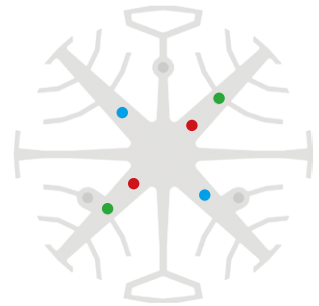
CITIZEN

Micro_HumanTech

Citizen Electronics Co., Ltd. is a precision electronics manufacturer with headquarters in Fujiyoshida City, Yamanash Japan. Prefecture and a subsidiary of Citizen Holdings Co., Ltd. Citizen Electronics is a leader in LED light sources for electronic devices and high power white LED lamps. The second generation CITED LED CLL LED COB modules and the new upcoming generation CLU distinguish themselves through the combination of high lumen per watt performance combined with a perfect light quality control.

Mounting indicator marks overview

MechaTronix recommends the use of a high thermal conductive interface between the LED module and the LED cooler. Either thermal grease, a thermal pad or a phase change thermal pad thickness 0.1-0.15mm is recommended. Thermal pads or phase change thermal pads can be pre-applied from MechaTronix.



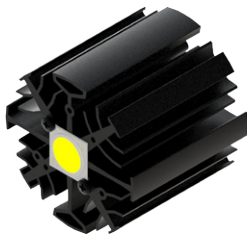
Citizen Cited COB CLU028 - CLU02J

Model names

- CLU028-xxxxxx
- CLU02J-xxxxxx

Mounting

- Direct mounting with 2 screws M3 x 6mm
Red indicator marks
- With Zhaga Book 3 LED holder
Bender+Wirth Hybrid holder 634a available with different housings
Mounting with 2 screws M3 x 6mm
Green indicator marks



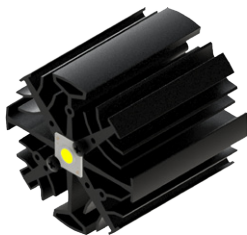
Citizen Cited COB CLU038 - CLU03J

Model names

- CLU038-xxxxxx
- CLU03J-xxxxxx

Mounting

- Direct mounting with 2 screws M3 x 6mm
Blue indicator marks
- With Zhaga Book 3 LED holder
BJB Spotlight connector 47.319.2021
Bender+Wirth Hybrid holder 633a available with different housings
Ideal Industries Chip-Lok™ holder 50-2103CT
TE Connectivity Lumawise type Z50 2213254
Mounting with 2 screws M3 x 6mm
Green indicator marks



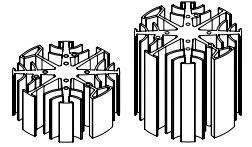
Citizen Cited COB High Intensity Type Version 3 CLU7A2 - CLU702

Model names

- CLU7A2-xxxxC9
- CLU702-1202C9

Mounting

- Direct mounting with 2 screws M3 x 6mm
Red indicator marks
- With Zhaga Book 3 LED holder
Bender+Wirth Hybrid holder 634a available with different housings
Mounting with 2 screws M3 x 6mm
Green indicator marks

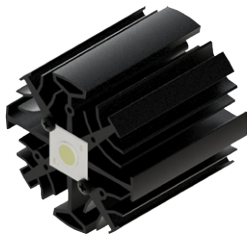


ø67 x H30 / 60 (mm)
Rth 3.13 - 2.27 °C/W
Power Pd 16 - 22 W

[MORE PRODUCT DETAILS](#)

CoolStar® 67 Designer series Citizen LED Star Cooler ø67mm

Mounting Instruction



Citizen Cited COB High Intensity Type Version 3 CLU712

Model names

- CLU712-1204C9

Mounting

- Direct mounting with 2 screws M3 x 6mm
Blue indicator marks
- With Zhaga Book 3 LED holder
BJB Spotlight connector 47.319.2021
Bender+Wirth Hybrid holder 633a available with different housings
Ideal Industries Chip-Lok™ holder 50-2103CT
TE Connectivity Lumawise type Z50 2213254
Mounting with 2 screws M3 x 6mm
Green indicator marks