

ø67 x H30 / 60 (mm)
Rth 3.13 - 2.27 °C/W
Power Pd 16 - 22 W

[MORE PRODUCT DETAILS](#)

CoolStar® 67 Designer series Bridgelux LED Star Cooler ø67mm

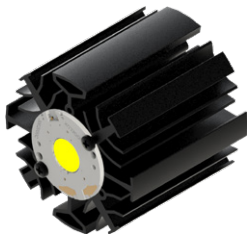
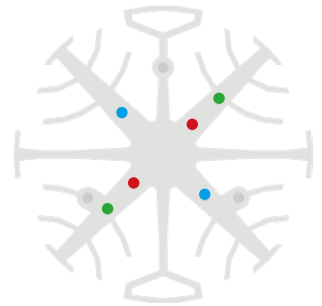
Mounting Instruction



Bridgelux is a leading provider of high power, cost effective and energy efficient light emitting diode (LED) solutions. Leveraging patented light source technology, Bridgelux LED Arrays replace traditional technologies (such as incandescent, halogen, fluorescent and high intensity discharge lighting) with integrated solid state light sources enabling high performance and energy-efficient products for the general lighting market.

Mounting indicator marks overview

MechaTronix recommends the use of a high thermal conductive interface between the LED module and the LED cooler. Either thermal grease, a thermal pad or a phase change thermal pad thickness 0.1-0.15mm is recommended. Thermal pads or phase change thermal pads can be pre-applied from MechaTronix.



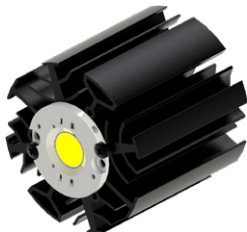
Bridgelux Gen 7 Vero 13 - 18 / Décor Vero 13 - 18 LED Array

Model names

- BXRC-xxx200x-x-7x
- BXRC-xxx400x-x-7x

Mounting

- Direct mounting with 2 screws M3 x 6mm
- Green indicator marks



Bridgelux Vero SE 13 - 18 / Décor Vero SE 13 - 18 LED Array

Model names

- BXRC-xxx200x-x-7x-SE
- BXRC-xxx400x-x-7x-SE

Mounting

- Direct mounting with 2 screws M3 x 6mm
- Green indicator marks



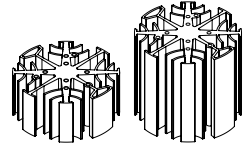
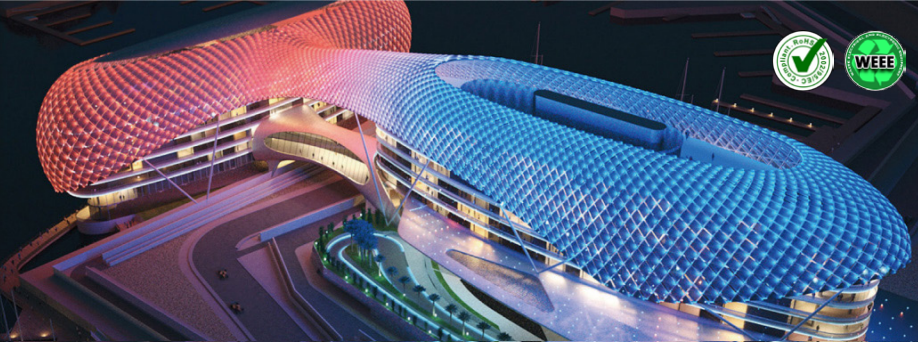
Bridgelux Gen 7 V series V8 LED Array

Model names

- BXRE-xxx080x-x-7x

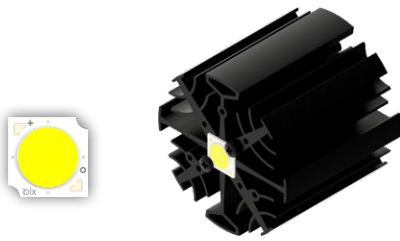
Mounting

- With Zhaga Book 3 LED holder
- Ledil HEKLA solderless connector FP15490_HEKLA-A
- Mounting with 2 screws M3 x 6mm
- Green indicator marks



CoolStar® 67 Designer series Bridgelux LED Star Cooler ø67mm

Mounting Instruction



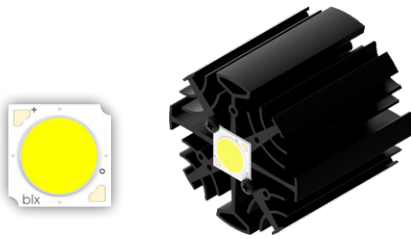
Bridgelux Gen 7 V series V10 LED Array

Model names

- BXRE->xxx100x-x-7x

Mounting

- Direct mounting with 2 screws M3 x 6mm
Red indicator marks
- With Zhaga Book 3 LED holder
Ledil HEKLA solderless connector FP15501_HEKLA-C
Mounting with 2 screws M3 x 6mm
Green indicator marks



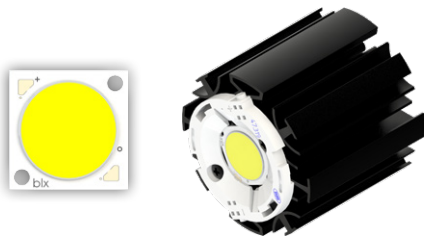
Bridgelux Gen 7 V series V13 LED Array

Model names

- BXRE->xxx200x-x-7x

Mounting

- Direct mounting with 2 screws M3 x 6mm
Blue indicator marks
- With Zhaga Book 3 LED holder
BJB spotlight connector 47.319.2025
Ideal Industries Chip-Lok™ holder 50-2103CT
Ledil HEKLA solderless connector FP15949_HEKLA-I
Mounting with 2 screws M3 x 6mm
Green indicator marks



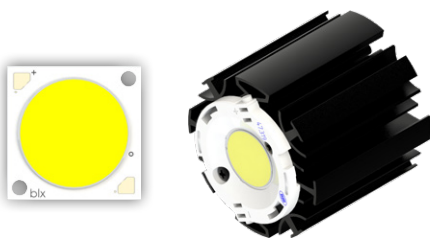
Bridgelux Gen7 V series V 18 LED Array

Model names

- BXRE->xxx400x-x-7x

Mounting

- With Zhaga Book 3 LED holder
BJB spotlight connector 47.319.2350
Mounting with 2 screws M3 x 6mm
Green indicator marks



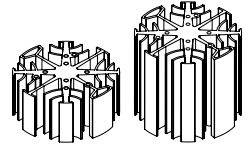
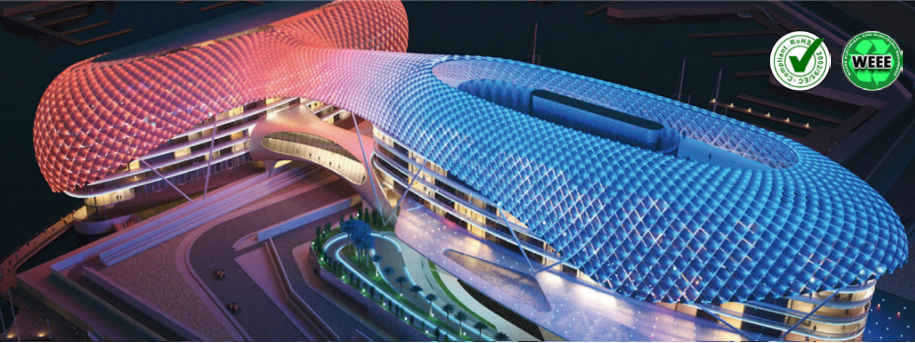
Bridgelux Gen7 V series V 22 LED Array

Model names

- BXRE->xxx650x-x-7x

Mounting

- With Zhaga Book 3 LED holder
BJB spotlight connector 47.319.2030
Ideal Industries Chip-Lok™ holder 50-2204CT
Bender+Wirth 431 Typ 2
Mounting with 2 screws M3 x 6mm
Green indicator marks

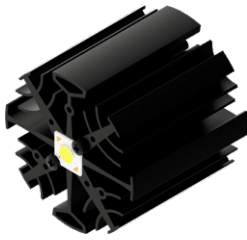


ø67 x H30 / 60 (mm)
Rth 3.13 - 2.27 °C/W
Power Pd 16 - 22 W

[MORE PRODUCT DETAILS](#)

CoolStar® 67 Designer series Bridgelux LED Star Cooler ø67mm

Mounting Instruction



Bridgelux Gen 7 V series V6 HD LED Array

Model names

- BXRH-xxx100x-B-73

Mounting

- Direct mounting with 2 screws M3 x 6mm
Red indicator marks



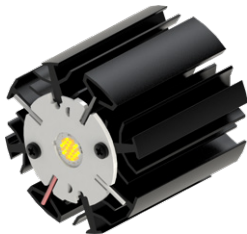
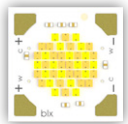
Bridgelux Gen 7 V series V9 HD LED Array

Model names

- BXRH-xxx300x-D-73

Mounting

- With Zhaga Book 3 LED holder
Bender+Wirth 496 Typ 1
Mounting with 2 screws M3 x 6mm
Green indicator marks



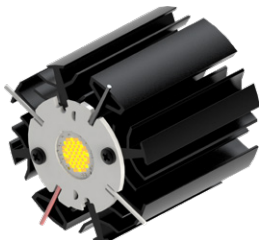
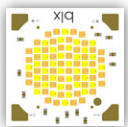
Bridgelux Vesta Series Tunable White 9mm LED Array

Model names

- BXRV-TR-xxxxG-1000-A-15

Mounting

- With Zhaga Book 3 LED holder
BJB spotlight connector 47.319.2360
Bender+Wirth LED holder 489 Typ L8
Mounting with 2 screws M3 x 6mm
Green indicator marks



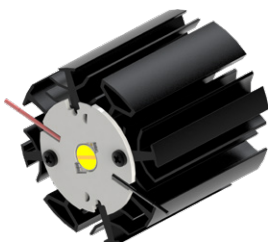
Bridgelux Vesta Series Tunable White 13mm LED Array

Model names

- BXRV-TR-xxxxG-2000-A-15

Mounting

- With Zhaga Book 3 LED holder
BJB spotlight connector 47.319.2370
Bender+Wirth LED holder 492 Typ L8
Mounting with 2 screws M3 x 6mm
Green indicator marks



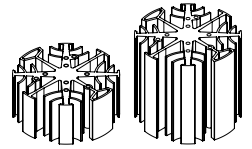
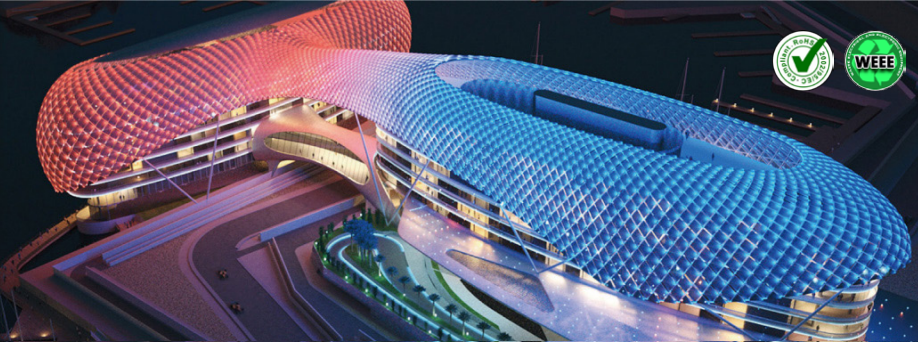
Bridgelux Vesta Series Dim-To-Warm 9mm LED Array

Model names

- BXRV-DR-xxxx-1000-x-13

Mounting

- With Zhaga Book 3 LED holder
Bender+Wirth LED holder 490 type L8
Mounting with 2 screws M3 x 6mm
Green indicator marks



ø67 x H30 / 60 (mm)
Rth 3.13 - 2.27 °C/W
Power Pd 16 - 22 W

[MORE PRODUCT DETAILS](#)

CoolStar® 67 Designer series Bridgelux LED Star Cooler ø67mm

Mounting Instruction



Bridgelux Vesta Series Dim-To-Warm 13mm LED Array

Model names

- BXRV-DR-xxxxx-2000-A-13

Mounting

- With Zhaga Book 3 LED holder
Bender+Wirth LED holder 491 Typ L8
Mounting with 2 screws M3 x 6mm
Green indicator marks