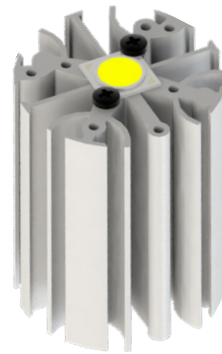


CoolStar® 47 Designer LED Star Cooler ø47mm

Features & Benefits

- For spot and downlight designs from 1,000 to 2,400 lumen
- Thermal resistance range Rth 4.17 - 5.0°C/W
- Modular design with mounting holes foreseen for a wide range of LED modules and COB's:
 - All Zhaga Book 3, Book 11 LED engines and holders
 - Bridgelux Gen7 Vero & Décor Vero 13, Gen7 V 10/13/18, Vesta Tunable White & Dim-To-Warm 9mm
 - Citizen Cited CLU028/02J, CLU038/03J, CLU7B2/7A2/702
 - Cree XLamp CXA13, CXB13, CXA15, CXB15, CMT14, CMA13/15
 - Edison EdiPower III HM05/09/13/16
 - LG Innotek LEMWM18 10W, 13W, 17W
 - Lumileds Luxeon COB's Gen4 1203, 1204
 - Luminus CXM-3(Pico-COB)/4(Pico-COB)/6/9(AC/AA), CIM-9/14, CLM-9, Gen3 CXM-6(AC)/9(AC)/11(AC), CIM-9(AC)/14(AC), CLM-9(AC), CHM-9(XD20), Dynamic CDM-6/9, CTM-9/14
 - Nichia NTCWT012B, NTCWS024B, NFCWL036-048B
 - Osram PrevaLED Core AC, AC PRO, Z3, Z4
 - Philips Fortimo SLM Gen4 1100, 2000
 - Prolight Opto PACE
 - Seoul Semiconductor ZC6, ZC12
 - Sharp Mega Zenigata, Mini Zenigata
 - Tridonic TALEXX STARK SLE Gen6 10/15/17mm, Module SLE G7 ADV 09/13mm
 - Vossloh Schwabe Luga Shop Gen6 DMS125, 126, 128
 - Xicato Chip on Board LED light source XOB06/09/14
- Designer series with high end looks
- Diameter 47mm - Standard height 40mm & 60mm
Other heights on request
- Black anodized or white electro-coating finishing



Zhaga
Book 3
Book 11

Order Information

LED Holders

**BENDER
+WIRTH**

BJB

IDEAL

TE
connectivity

LED Brands

bridgelux

CITIZEN
Micro HumanTech

CREE

EDISON

LG Innotek

Lit by
LUMILEDS

LUMINUS

NICHIA

OSRAM

LED Light for you
powered by OSRAM
CERTIFIED PARTNER

PHILIPS

Prolight Opto
Technology Corporation

SEMI
SEOUL SEMICONDUCTOR

SHARP

TRIDONIC

VS
LIGHTING SOLUTIONS

Xicato

Example : CoolStar® Black 4740

CoolStar® **1** 47 **2**

- 1** Finishing Color
Black - Black anodized
White - White electro-coating
- 2** Height (mm)

CoolStar® 47 is designed in this way that you can mount LED modules from various manufacturers on the same LED cooler

Simple mounting with M3 screws

Recommended screw force 6lb/in

Screws are available from MechaTronix

CoolStar® 47 Designer LED Star Cooler ø47mm

Product Details

Model n°	CoolStar® 4740	CoolStar® 4760
Dimension (mm) ^{*1}	ø47 x h40	ø47 x h60
Volume (mm ³)	28782	44310
Cooling Surface (mm ²)	22470	32762
Weight (gr)	78	117
Thermal Resistance (°C/W) ^{*2}	5	4.17
Power Pd (W) ^{*3}	10	12
Heat Sink Material	AL6063-T5	AL6063-T5

^{*1} 3D files are available in ParaSolid, STP and IGS on request

^{*2} The thermal resistance Rth is determined with a calibrated heat source of 10mm x 10mm central placed on the heat sink, Tamb 40° and an open environment. Reference data @ heat sink to ambient temperature rise Ths-amb 50°C
The thermal resistance of a LED cooler is not a fix value and will vary with the applied dissipated power Pd

^{*3} Dissipated power Pd. Reference data @ heat sink to ambient temperature rise Ths-amb 50°C
The maximal dissipated power needs to be verified in function of required case temperature Tc or junction temperature Tj and related to the estimated ambient temperature where the light fixture will be placed
Please be aware the dissipated power Pd is not the same as the electrical power Pe of a LED module

To calculate the dissipated power please use the following formula: $Pd = Pe \times (1 - \eta_L)$

Pd - Dissipated power

Pe - Electrical power

η_L = Light efficiency of the LED module

Notes:

- MechaTronix reserves the right to change products or specifications without prior notice.
- Mentioned models are an extraction of full product range.
- For specific mechanical adaptations please contact MechaTronix.