

ø47 x H40 / 60 (mm)
Rth 5.0 - 4.17 °C/W
Power Pd 10 - 12 W

[MORE PRODUCT DETAILS](#)

CoolStar® 47 Designer series Vossloh Schwabe LED Star Cooler ø47mm

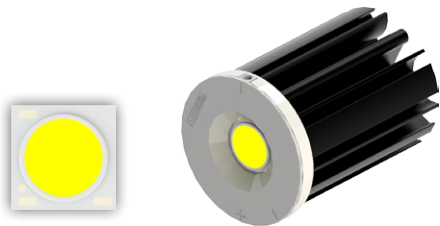
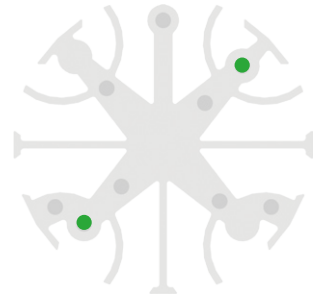
Mounting Instructions



Vossloh-Schwabe is an independent brand within the Panasonic Group responsible for the global development of the business area "Components for light technology". Panasonic employs 367,000 members of staff with an annual turnover of 76.75 billion Euros (8692.7 billion yen) and is represented throughout the world by more than 634 companies or representations in Asia, America and Europe. The Vossloh Schwabe Luga Shop LED modules are ideal solution for high-end luminaire designs where quality stands at the first place.

Mounting indicator marks overview

MechaTronix recommends the use of a high thermal conductive interface between the LED module and the LED cooler. Either thermal grease, a thermal pad or a phase change thermal pad thickness 0.1-0.15mm is recommended. Thermal pads or phase change thermal pads can be pre-applied from MechaTronix.



LUGA Shop Gen 6 LED COB

Model names

- DMS125xxxH
- DMS126xxxH
- DMS128xxxH

Mounting

- With Luga Shop Kit holder 564174 / 564170
- Mounting with 2 screws M3 x 6mm
- Green indicator marks