

ø47 x H40 / 60 (mm)
Rth 5.0 - 4.17 °C/W
Power Pd 10 - 12 W

[MORE PRODUCT DETAILS](#)

CoolStar® 47 Designer series Tridonic Talexx LED Star Cooler ø47mm

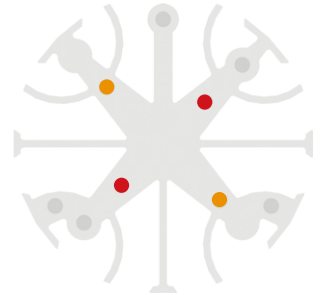
Mounting Instructions

TRIDONIC

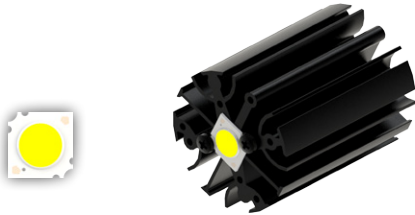
With the TALEXX LED products Tridonic gives you the confidence that your chosen lighting solution will give you precisely the results you want. Thanks to Tridonic's many years of experience in product development they have been able to raise the quality of light from their LEDs to new levels. The production series have an exceptionally constant light color so they guarantee a uniform and crystal clear color appearance. In addition to high efficiency and balanced distribution of light Tridonic offers you impressive robustness in the latest generation of their products and the resultant long life will save you maintenance and repair costs.

Mounting indicator marks overview

MechaTronix recommends the use of a high thermal conductive interface between the LED module and the LED cooler. Either thermal grease, a thermal pad or a phase change thermal pad thickness 0.1-0.15mm is recommended. Thermal pads or phase change thermal pads can be pre-applied from MechaTronix.



TALEXX STARK SLE GEN6 10mm Advanced



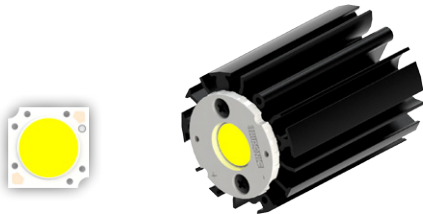
Model names

- SLE G6 10mm 1200lm XXX R ADV

Mounting

- Direct mounting with 2 screws M3 x 6mm
Red indicator marks
- With Zhaga Book 11 LED holder
Tridonic SLE housing 28001038
Mounting with 2 screws M3 x 6mm
Orange indicator marks

TALEXX STARK SLE G6 15mm SNC / TINGE EXC



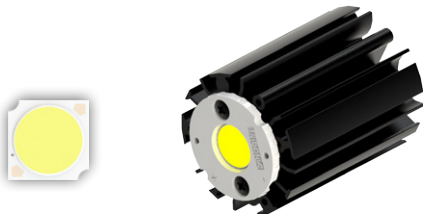
Model names

- SLE G6 15mm 3000lm XXX R SNC
- SLE G6 15mm 3000lm XXX Tinge R EXC

Mounting

- With Zhaga Book 11 LED holder
Tridonic SLE housing 28001039
Mounting with 2 screws M3 x 6mm
Orange indicator marks

TALEXX STARK SLE G6 17mm SNC / TINGE EXC



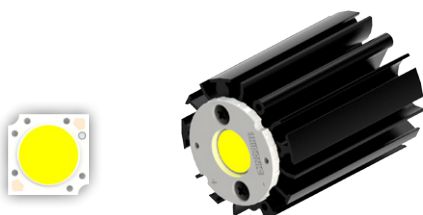
Model names

- SLE G6 17mm 4000lm XXX R SNC
- SLE G6 17mm 4000lm XXX Tinge R EXC

Mounting

- With Zhaga Book 11 LED holder
Tridonic SLE housing 28001039
Mounting with 2 screws M3 x 6mm
Orange indicator marks

TALEXX STARK SLE G6 15mm FASHION EXC

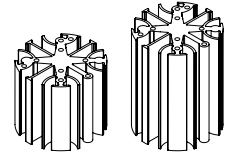


Model names

- SLE G6 15mm 3000lm FASHION R EXC

Mounting

- With Zhaga Book 11 LED holder
Tridonic SLE housing 28001039
Mounting with 2 screws M3 x 6mm
Orange indicator marks



ø47 x H40 / 60 (mm)
Rth 5.0 - 4.17 °C/W
Power Pd 10 - 12 W

[MORE PRODUCT DETAILS](#)

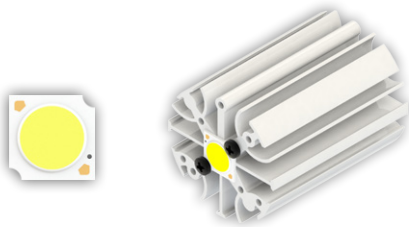
CoolStar® 47 Designer series Tridonic Talexx LED Star Cooler ø47mm

Mounting Instructions

Module SLE G7 ADV 09mm

Model names

- SLE G7 09mm 1200lm xxx x ADV



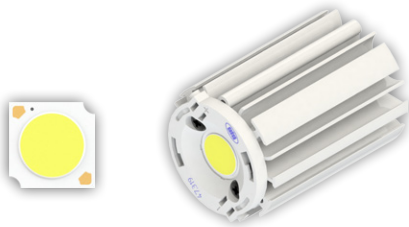
Mounting

- Direct mounting with 2 screws M3 x 6mm
Red indicator marks
- With Zhaga Book 11 LED holder
Tridonic SLE housing 28001038
BJB spotlight connector 47.319.6060
BJB spotlight connector 47.319.6294
BJB spotlight connector 47.360.1020
Bender+Wirth 434 Typ 2
Mounting with 2 screws M3 x 6mm
Orange indicator marks
- With Zhaga Book 3 LED holder
Ledil HEKLA solderless connector FP15501_HEKLA-C
Mounting with 2 screws M3 x 6mm
Green indicator marks

Module SLE G7 ADV 13mm

Model names

- SLE G7 13mm 3000lm xxx x ADV



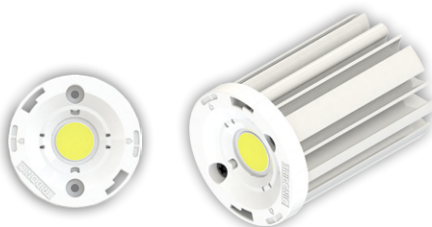
Mounting

- With Zhaga Book 11 LED holder
BJB spotlight connector 47.319.6024
BJB spotlight connector 47.360.1010
Mounting with 2 screws M3 x 6mm
Orange indicator marks
- With Zhaga Book 3 LED holder
BJB spotlight connector 47.319.2021
BJB spotlight connector 47.360.2025
Ledil HEKLA solderless connector FP15949_HEKLA-I
Mounting with 2 screws M3 x 6mm
Green indicator marks

Module SLE G7 ADV 13mm

Model names

- SLE G7 13mm 3000lm xxx H ADV



Mounting

- Direct mounting with 2 screws M3 x 6mm
Green indicator marks