

ø47 x H40 / 60 (mm)
Rth 5.0 - 4.17 °C/W
Power Pd 10 - 12 W

[MORE PRODUCT DETAILS](#)

CoolStar® 47 Designer series Philips Fortimo LED Star Cooler ø47mm

Mounting Instructions

PHILIPS

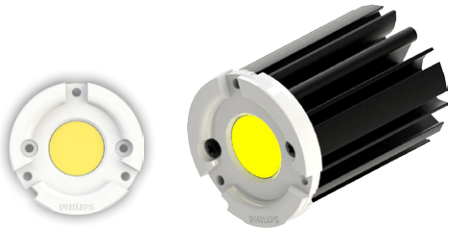
The third Philips Fortimo LED SLM generation is the ideal solution for spot lighting fixtures and highly efficient compact down light luminaires. It is specifically designed for the retail market showcasing retail merchandise in bright and vivid light. This generation is equipped with new Chip-On-Board (COB) LED technology. This technology enables the creation of the most efficient point source Philips LED system available.

Mounting indicator marks overview

MechaTronix recommends the use of a high thermal conductive interface between the LED module and the LED cooler. Either thermal grease, a thermal pad or a phase change thermal pad thickness 0.1-0.15mm is recommended. Thermal pads or phase change thermal pads can be pre-applied from MechaTronix.



Philips Fortimo SLM GEN4 LED Modules



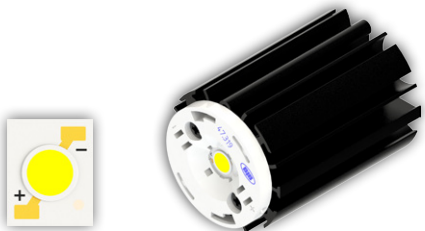
Model names

- Fortimo LED SLM 1100lm xxx L9 G4 NA
- Fortimo LED SLM 1100lm xxx L13 G4
- Fortimo LED SLM 1100lm 930 CW L13 G4

Mounting

- Direct mounting with 2 screws M3 x 6mm
- Green indicator marks

Philips Fortimo SLM 1202 Gen 6 / Premium White / Crisp White Spotlight Modules



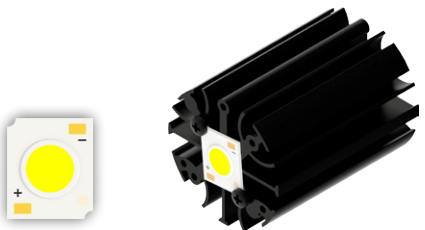
Model names

- Fortimo SLM C xxx xxx 1202 L06 1215 G6

Mounting

- With Zhaga Book 11 LED holder
- BJB Spotlight connector 47.319.6180
- Ideal Industries Chip-Lok™ holder 50-2000P
- Mounting with 2 screws M3 x 6mm
- Orange indicator marks

Philips Fortimo SLM 1203 Gen 6 / Premium White / Crisp White Spotlight Modules



Model names

- Fortimo SLM C xxx xxx 1203 L09 1619 G6

Mounting

- Direct mounting with 2 screws M3 x 6mm
- Orange indicator marks
- With Zhaga Book 3 LED holder
- Philips Fortimo SLM H xx 1619 G1
- Mounting with 2 screws M3 x 6mm
- Green indicator marks