

ø47 x H40 / 60 (mm)
Rth 5.0 - 4.17 °C/W
Power Pd 10 - 12 W

MORE PRODUCT DETAILS

CoolStar® 47 Designer series Luminus LED Star Cooler ø47mm

Mounting Instructions



Patented, high performance Luminus LEDs are the brightest and most versatile solid state light sources available today, redefining the solid state lighting landscape by enabling the adoption of LED technology into emerging markets. Luminus technology is used in commercial and industrial lighting fixtures, theatrical lighting, projectors, signs, medical equipment, UV curing... just about anywhere a bright, efficient, reliable, long-life light source is needed.

Mounting indicator marks overview

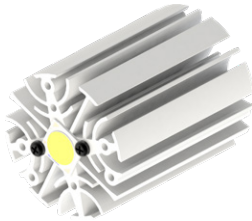
MechaTronix recommends the use of a high thermal conductive interface between the LED module and the LED cooler. Either thermal grease, a thermal pad or a phase change thermal pad thickness 0.1-0.15mm is recommended. Thermal pads or phase change thermal pads can be pre-applied from MechaTronix.



Luminus Gen 4 COB Array

Model names

- CXM-3 (Pico-COB)
- CXM-4 (Pico-COB)
- CXM-6
- CIM-9
- CLM-9
- CXM-9 (AC)



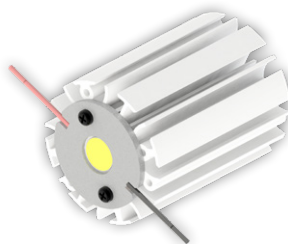
Mounting

- Direct mounting with 2 screws M3 x 6mm
Red indicator marks
- With Zhaga Book 3 LED holder
Bender+Wirth 634a
Mounting with 2 screws M3 x 6mm
Green indicator marks
- With Zhaga Book 11 LED holder
BJB spotlight connector 47.319.6060
BJB spotlight connector 47.360.1020
Ideal Industries Chip-Lok™ holder 50-2002CT
Bender+Wirth 434 Typ 2
Mounting with 2 screws M3 x 6mm
Orange indicator marks

Luminus Gen 4 COB Array

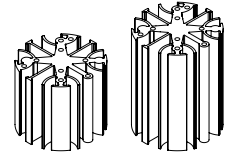
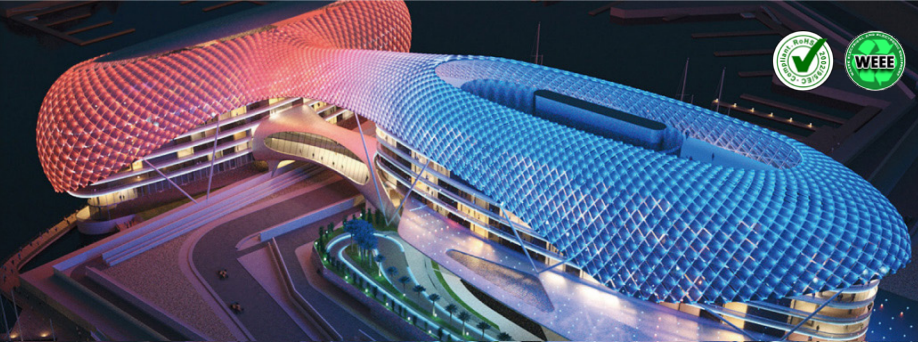
Model names

- CXM-9 (AA)



Mounting

- With Zhaga Book 11 LED holder
Bender+Wirth 461 Typ 1
Mounting with 2 screws M3 x 6mm
Orange indicator marks

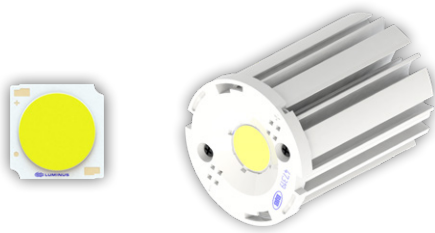


ø47 x H40 / 60 (mm)
 Rth 5.0 - 4.17 °C/W
 Power Pd 10 - 12 W

[MORE PRODUCT DETAILS](#)

CoolStar® 47 Designer series Luminus LED Star Cooler ø47mm

Mounting Instructions



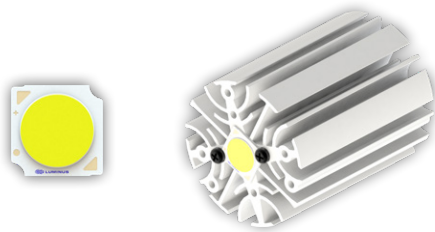
Luminus Gen 4 COB Array

Model names

- CIM-14

Mounting

- With Zhaga Book 3 LED holder
 BJB spotlight connector 47.319.2021
 Bender+Wirth 633a
 TE Connectivity Lumawise type Z50 2213254
 Mounting with 2 screws M3 x 6mm
 Green indicator marks
- With Zhaga Book 11 LED holder
 BJB spotlight connector 47.319.6024
 Mounting with 2 screws M3 x 6mm
 Orange indicator marks



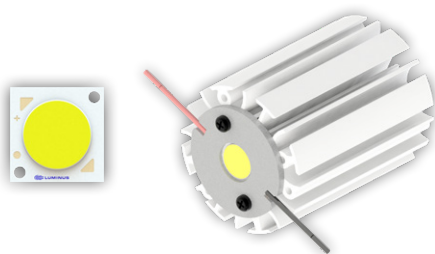
Luminus Gen 3 COB Array

Model names

- CXM-6 (AC)
- CIM-9 (AC)
- CLM-9 (AC)
- CXM-9 (AC)

Mounting

- Direct mounting with 2 screws M3 x 6mm
 Red indicator marks
- With Zhaga Book 3 LED holder
 Bender+Wirth 634a
 Mounting with 2 screws M3 x 6mm
 Green indicator marks
- With Zhaga Book 11 LED holder
 BJB spotlight connector 47.319.6060
 BJB spotlight connector 47.360.1020
 Ideal Industries Chip-Lok™ holder 50-2002CT
 Bender+Wirth 434 Typ 2
 Mounting with 2 screws M3 x 6mm
 Orange indicator marks



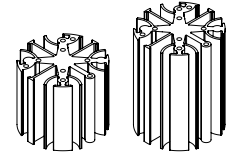
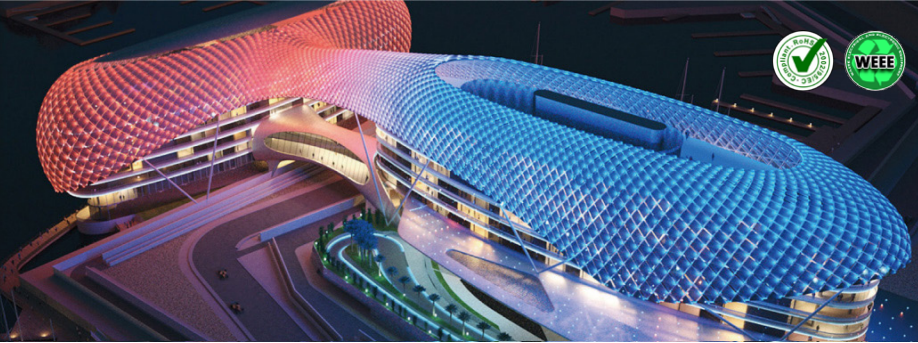
Luminus Gen 3 COB Array

Model names

- CHM-9 (XD20)

Mounting

- With Zhaga Book 11 LED holder
 Bender+Wirth 461 Typ 1
 Mounting with 2 screws M3 x 6mm
 Orange indicator marks

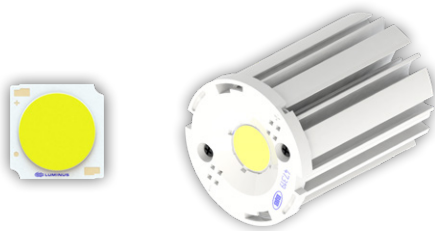


ø47 x H40 / 60 (mm)
 Rth 5.0 - 4.17 °C/W
 Power Pd 10 - 12 W

[MORE PRODUCT DETAILS](#)

CoolStar® 47 Designer series Luminus LED Star Cooler ø47mm

Mounting Instructions



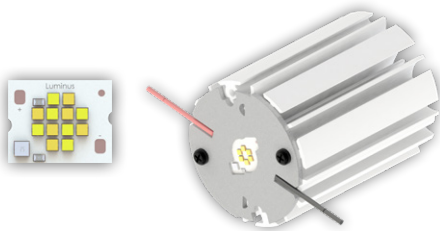
Luminus Gen 3 COB Array

Model names

- CXM-11 (AC)
- CIM-14 (AC)

Mounting

- With Zhaga Book 3 LED holder
 BJB spotlight connector 47.319.2021
 Bender+Wirth 633a
 TE Connectivity Lumawise type Z50 2213254
 Mounting with 2 screws M3 x 6mm
 Green indicator marks
- With Zhaga Book 11 LED holder
 BJB spotlight connector 47.319.6024
 Mounting with 2 screws M3 x 6mm
 Orange indicator marks



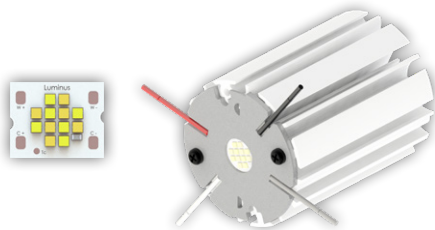
Luminus Dynamic COB Warm Dimming Modules

Model names

- CDM-6
- CDM-9

Mounting

- With Zhaga Book 3 LED holder
 Bender+Wirth 490 Typ L8
 Mounting with 2 screws M3 x 6mm
 Green indicator marks
- With Zhaga Book 11 LED holder
 BJB spotlight connector 47.319.6380
 Mounting with 2 screws M3 x 6mm
 Orange indicator marks



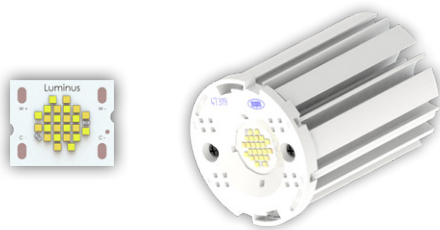
Luminus Dynamic COB Two Channel CCT Tunable Modules

Model names

- CTM-9

Mounting

- With Zhaga Book 3 LED holder
 Bender+Wirth 495 Typ L8
 Mounting with 2 screws M3 x 6mm
 Green indicator marks



Luminus Dynamic COB Two Channel CCT Tunable Modules

Model names

- CTM-14

Mounting

- With Zhaga Book 3 LED holder
 BJB spotlight connector 47.319.2051
 Bender+Wirth 442 Typ 2
 Mounting with 2 screws M3 x 6mm
 Green indicator marks