

ø47 x H40 / 60 (mm)
Rth 5.0 - 4.17 °C/W
Power Pd 10 - 12 W

MORE PRODUCT DETAILS

CoolStar® 47 Designer series Lumileds LED Star Cooler ø47mm

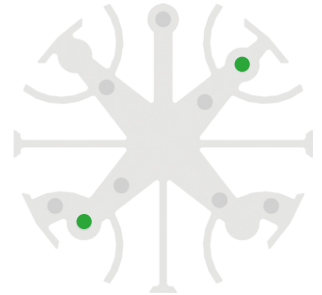
Mounting Instructions



Lumileds LUXEON COB is a new breakthrough in efficacy for arrays. Due to its industry leading small Light Emitting Surfaces (LES), the COB array is very easy work with and will enable easier and less expensive designs. All LUXEON COBs are available in a single 3-step as well as a single 5-step MacAdam Ellipse, ensuring uniform optical performance in the application. Ideal applications include down lights and directional lamps.

Mounting indicator marks overview

MechaTronix recommends the use of a high thermal conductive interface between the LED module and the LED cooler. Either thermal grease, a thermal pad or a phase change thermal pad thickness 0.1-0.15mm is recommended. Thermal pads or phase change thermal pads can be pre-applied from MechaTronix.



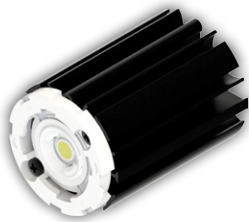
Lumileds Gen 4 Luxeon COB Core Range 1202s

Model names

- L2C5-xxxx1202E0600

Mounting

- With Zhaga Book 3 LED holder
Ledil HEKLA solderless connector FP15947_HEKLA-G
Mounting with 2 screws M3 x 6mm
Green indicator marks
- With Zhaga Book 11 LED holder
BJB spotlight connector 47.319.6180
Ideal Industries Chip-Lok™ holder 50-2000P
Mounting with 2 screws M3 x 6mm
Green indicator marks



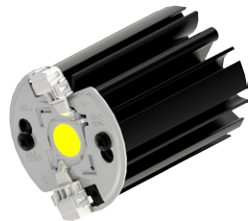
Lumileds Gen 4 Luxeon COB Core Range 1202 - 1203

Model names

- L2C5-xxxx1202E0900
- L2C5-xxxx1203x0900

Mounting

- Direct mounting with 2 screws M3 x 6mm
Orange indicator marks
- With Zhaga Book 3 LED holder
Ideal Industries Chip-Lok™ holder 50-2100NC
Ledil HEKLA solderless connector FP15948_HEKLA-H
TE Connectivity Lumawise type Z50 2213382
Mounting with 2 screws M3 x 6mm
Green indicator marks



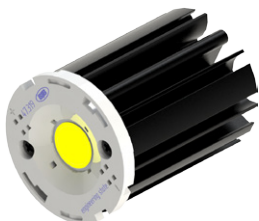
Lumileds Gen4 Luxeon COB 1204

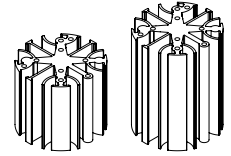
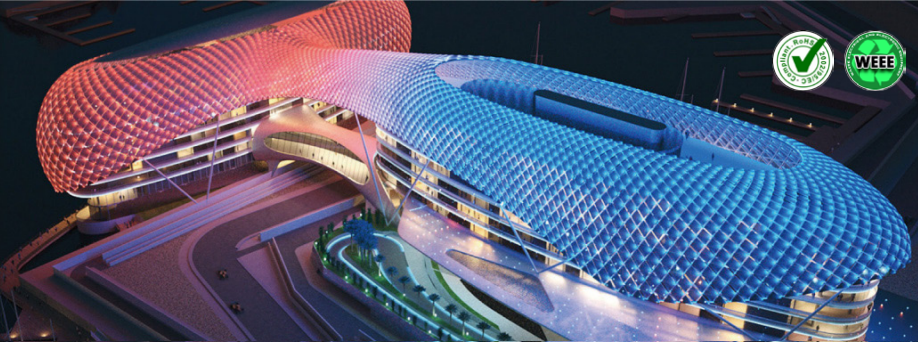
Model names

- L2C5-xxxx1204x1300

Mounting

- With Zhaga Book 3 LED holder
BJB spotlight connector 47.319.2013
Ideal Industries Chip-Lok™ holder 50-2100SH
TE Connectivity Lumawise type Z50 2213130
Mounting with 2 screws M3 x 6mm
Green indicator marks



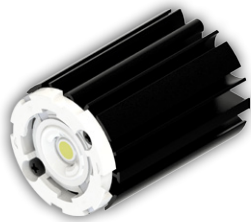


ø47 x H40 / 60 (mm)
Rth 5.0 - 4.17 °C/W
Power Pd 10 - 12 W

[MORE PRODUCT DETAILS](#)

CoolStar® 47 Designer series Lumileds LED Star Cooler ø47mm

Mounting Instructions



Lumileds Gen 4 Luxeon CoB Core Range High Density 1202

Model names

- L2C5-xxxx1202EH0600

Mounting

- With Zhaga Book 3 LED holder
Ledil HEKLA solderless connector FP15947_HEKLA-G
Mounting with 2 screws M3 x 6mm
Green indicator marks
- With Zhaga Book 11 LED holder
BJB spotlight connector 47.319.6180
Ideal Industries Chip-Lok™ holder 50-2000P
Mounting with 2 screws M3 x 6mm
Green indicator marks