

ø47 x H40 / 60 (mm)  
Rth 5.0 - 4.17 °C/W  
Power Pd 10 - 12 W

[MORE PRODUCT DETAILS](#)

## CoolStar® 47 Designer series LG Innotek LED Star Cooler ø47mm

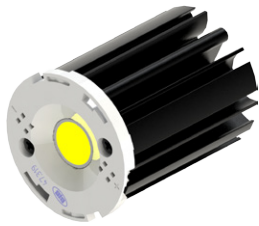
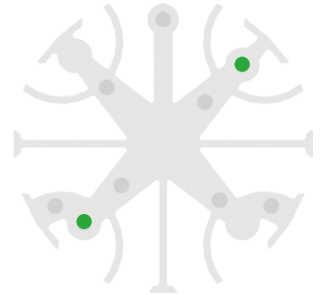
### Mounting Instructions



LG Innotek is a global specialized material and component manufacturer who is making a better world through cutting edge core component technology that is leading the market and opening a smarter future through the development of new eco-friendly materials. With the world's highest production capacity as a single factory and a solid LED business base built over more than a decade, LG Innotek's Paju LED factory produces 2 billion chips a month. Their LEMWM COB LED modules deliver a perfect lumen per watt ratio in an uncompromised lighting quality.

#### Mounting indicator marks overview

MechaTronix recommends the use of a high thermal conductive interface between the LED module and the LED cooler. Either thermal grease, a thermal pad or a phase change thermal pad thickness 0.1-0.15mm is recommended. Thermal pads or phase change thermal pads can be pre-applied from MechaTronix.



#### LG LEMWM18 10W/13W/17W COB

##### Model names

- LEMWM18580xxxx
- LEMWM18680xxxx
- LEMWM18780xxxx

##### Mounting

- With Zhaga Book 3 LED holder  
BJB Spotlight connector 47.319.2080  
Ideal Industries Chip-Lok™ holder 50-2100LG  
Mounting with 2 screws M3 x 6mm  
Green indicator marks