

ø47 x H40 / 60 (mm)  
 Rth 5.0 - 4.17 °C/W  
 Power Pd 10 - 12 W

[MORE PRODUCT DETAILS](#)

## CoolStar® 47 Designer series Citizen LED Star Cooler ø47mm

### Mounting Instructions

## CITIZEN

Micro\_HumanTech

Citizen Electronics Co., Ltd. is a precision electronics manufacturer with headquarters in Fujiyoshida City, Yamanash Japan. Prefecture and a subsidiary of Citizen Holdings Co., Ltd. Citizen Electronics is a leader in LED light sources for electronic devices and high power white LED lamps. The second generation CITED LED CLL LED COB modules and the new upcoming generation CLU distinguish themselves through the combination of high lumen per watt performance combined with a perfect light quality control.

### Mounting indicator marks overview

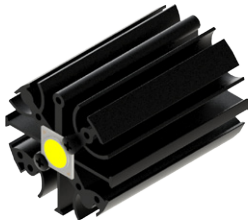
MechaTronix recommends the use of a high thermal conductive interface between the LED module and the LED cooler. Either thermal grease, a thermal pad or a phase change thermal pad thickness 0.1-0.15mm is recommended. Thermal pads or phase change thermal pads can be pre-applied from MechaTronix.



### Citizen Cited COB CLU028 - CLU02J

#### Model names

- CLU028-xxxxxx
- CLU02J-xxxxxx



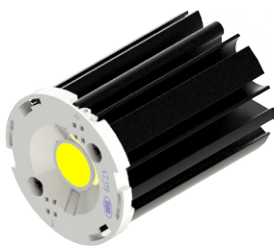
#### Mounting

- Direct mounting with 2 screws M3 x 6mm  
 Red indicator marks
- With Zhaga Book 3 LED holder  
 Bender+Wirth Hybrid holder 634a available with different housings  
 Mounting with 2 screws M3 x 6mm  
 Green indicator marks
- With Zhaga Book 11 LED holder  
 BJB Spotlight connector 47.319.6060  
 Ideal Industries Chip-Lok™ holder 50-2002CT  
 Mounting with 2 screws M3 x 6mm  
 Orange indicator marks

### Citizen Cited COB CLU038 - CLU03J

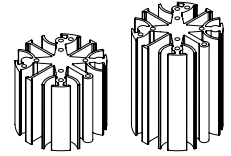
#### Model names

- CLU038-xxxxxx
- CLU03J-xxxxxx



#### Mounting

- With Zhaga Book 3 LED holder  
 BJB Spotlight connector 47.319.2021  
 Bender+Wirth Hybrid holder 633a available with different housings  
 Ideal Industries Chip-Lok™ holder 50-2103CT  
 TE Connectivity Lumawise type Z50 2213254  
 Mounting with 2 screws M3 x 6mm  
 Green indicator marks



ø47 x H40 / 60 (mm)  
Rth 5.0 - 4.17 °C/W  
Power Pd 10 - 12 W

[MORE PRODUCT DETAILS](#)

## CoolStar® 47 Designer series Citizen LED Star Cooler ø47mm

### Mounting Instructions

#### Citizen Cited COB High Intensity Type Version 3 CLU7B2 - CLU7A2 - CLU702

##### Model names

- CLU7B2-0701C4
- CLU7A2-xxxxC9
- CLU702-1202C9

##### Mounting

- Direct mounting with 2 screws M3 x 6mm  
Red indicator marks
- With Zhaga Book 3 LED holder  
Bender+Wirth Hybrid holder 634a available with different housings  
Mounting with 2 screws M3 x 6mm  
Green indicator marks
- With Zhaga Book 11 LED holder  
BJB Spotlight connector 47.319.6060  
Ideal Industries Chip-Lok™ holder 50-2002CT  
Mounting with 2 screws M3 x 6mm  
Orange indicator marks

