

ø34.5 x H45 (mm)
 Rth 8.13 °C/W
 Power Pd 6 W

[MORE PRODUCT DETAILS](#)

CoolStar® 3445 Designer series Seoul Semiconductor LED Star Cooler ø34.5mm

Mounting Instructions

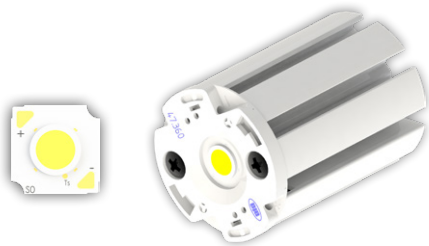


SEOUL SEMICONDUCTOR

The new Seoul Semiconductor ZC series Chip-On-Board (COB) LED Arrays offer high lumen density and efficacies of up to 140lm/W in a single, easy-to-use LED component family. Available in all major color temperatures from 2700K up to 6000K, these high flux packages deliver system level performance of 700 lumens to over 6,000 lumens. The new ZC series family is available in a single 3-step MacAdam Ellipse binning, ensuring excellent color consistency with minimum CRI options of 70, and 80 combining high quality of light with high efficacy.

Mounting indicator marks overview

MechaTronix recommends the use of a high thermal conductive interface between the LED module and the LED cooler. Either thermal grease, a thermal pad or a phase change thermal pad thickness 0.1-0.15mm is recommended. Thermal pads or phase change thermal pads can be pre-applied from MechaTronix.



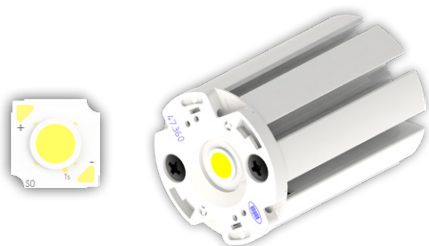
Seoul Semiconductor Acrich MJT COB 13.5x13.5mm

Model names

- SAWx0661A
- SAWx1062A
- SAWx1063A

Mounting

- With Zhaga Book 11 LED holder
- BJB Spotlight connector 47.319.6294
- BJB Spotlight connector 47.360.1020
- Bender+Wirth 434 Typ 2
- TE Connectivity Lumawise type Z35 2213678-5
- Mounting with 2 screws M3 x 6mm
- Orange indicator marks



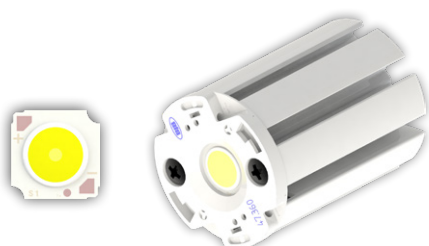
Seoul Semiconductor Acrich MJT SunLike COB 13.5x13.5mm

Model names

- SAWS0661A
- SAWS1063A

Mounting

- With Zhaga Book 11 LED holder
- BJB Spotlight connector 47.319.6294
- BJB Spotlight connector 47.360.1020
- Bender+Wirth 434 Typ 2
- TE Connectivity Lumawise type Z35 2213678-5
- Mounting with 2 screws M3 x 6mm
- Orange indicator marks



Seoul Semiconductor ZC4 / ZC6 Z-Power COB

Model names

- SDW81F1DY
- SDWx1F1B
- SDWx1F1C

Mounting

- With Zhaga Book 11 LED holder
- BJB Spotlight connector 47.319.6294
- BJB Spotlight connector 47.360.1020
- Ideal Industries Chip-Lok™ holder 50-2002CT
- Mounting with 2 screws M3 x 6mm
- Orange indicator marks