

ø34.5 x H45 (mm)
Rth 8.13 °C/W
Power Pd 6 W

[MORE PRODUCT DETAILS](#)

CoolStar® 3445 Designer series Cree XLamp LED Star Cooler ø34.5mm

Mounting Instructions

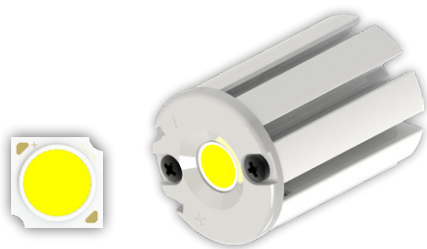


Cree XLamp® LEDs deliver the industry's best lighting-class performance and are application-optimized to enable the lowest system cost.

Cree's new CXA LED Arrays deliver high lumen output and efficacy in a family of single, easy-to-use components. Optimized to simplify designs and lower system cost, Cree's CXA LED arrays are available in system level performance from 300 to over 16,000 lumens and can enable applications ranging from GU10s and commercial downlights to outdoor area lighting and high-bay lighting.

Mounting indicator marks overview

MechaTronix recommends the use of a high thermal conductive interface between the LED module and the LED cooler. Either thermal grease, a thermal pad or a phase change thermal pad thickness 0.1-0.15mm is recommended. Thermal pads or phase change thermal pads can be pre-applied from MechaTronix.



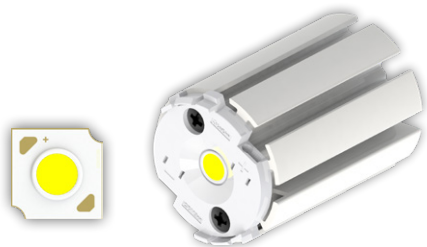
Cree XLamp CMT LED Arrays 1407

Model names

- CMT1407

Mounting

- With Zhaga Book 11 LED holder
TE Connectivity Lumawise type Z35 2213678-5
Bender+Wirth LED holder 434 Typ 2
Mounting with 2 screws M3 x 6mm
Orange indicator marks



Cree XLamp CMA LED Arrays 1303

Model names

- CMA1303

Mounting

- With LED holder
Ledlink LED connector LL01A00xxxB2
Mounting with 2 screws M3 x 6mm
Red indicator marks