

ø34.5 x H45 (mm)  
 Rth 8.13 °C/W  
 Power Pd 6 W

[MORE PRODUCT DETAILS](#)

## CoolStar® 3445 Designer series Citizen LED Star Cooler ø34.5mm

### Mounting Instructions

## CITIZEN

Micro\_HumanTech

Citizen Electronics Co., Ltd. is a precision electronics manufacturer with headquarters in Fujiyoshida City, Yamanash Japan. Prefecture and a subsidiary of Citizen Holdings Co., Ltd. Citizen Electronics is a leader in LED light sources for electronic devices and high power white LED lamps. The second generation CITILED CLL LED COB modules and the new upcoming generation CLU distinguish themselves through the combination of high lumen per watt performance combined with a perfect light quality control.

### Mounting indicator marks overview

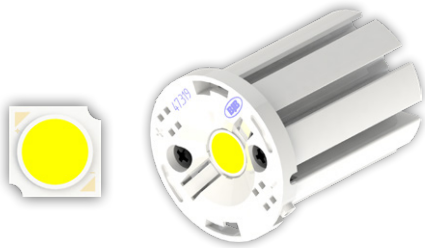
MechaTronix recommends the use of a high thermal conductive interface between the LED module and the LED cooler. Either thermal grease, a thermal pad or a phase change thermal pad thickness 0.1-0.15mm is recommended. Thermal pads or phase change thermal pads can be pre-applied from MechaTronix.



### Citizen Citiled COB CLU02J

#### Model names

- CLU02J-xxxxxx



#### Mounting

- With Zhaga Book 11 LED holder
  - BJB Spotlight connector 47.319.6060
  - BJB Spotlight connector 47.360.1020
  - Ideal Industries Chip-Lok™ holder 50-2002CT
  - TE Connectivity Lumawise type Z35 2213678-5
  - Bender+Wirth LED holder 434 Typ 2
  - Mounting with 2 screws M3 x 6mm
  - Orange indicator marks
- With LED holder
  - Ledlink LED connector LL01A00xxxB2
  - Mounting with 2 screws M3 x 6mm
  - Red indicator marks

### Citizen Citiled COB High Intensity Type Version 3 CLU7B2 - CLU7A2

#### Model names

- CLU7B2-0701C4
- CLU7A2-xxxxC9



#### Mounting

- With Zhaga Book 11 LED holder
  - BJB Spotlight connector 47.319.6060
  - BJB Spotlight connector 47.360.1020
  - Ideal Industries Chip-Lok™ holder 50-2002CT
  - TE Connectivity Lumawise type Z35 2213678-5
  - Bender+Wirth LED holder 434 Typ 2
  - Mounting with 2 screws M3 x 6mm
  - Orange indicator marks
- With LED holder
  - Ledlink LED connector LL01A00xxxB2
  - Mounting with 2 screws M3 x 6mm
  - Red indicator marks