

ø34.5 x H45 (mm)
 Rth 8.13 °C/W
 Power Pd 6 W

MORE PRODUCT DETAILS

CoolStar® 3445 Designer series Bridgelux LED Star Cooler ø34.5mm

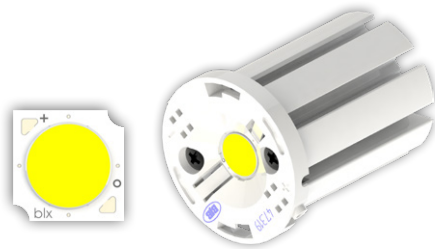
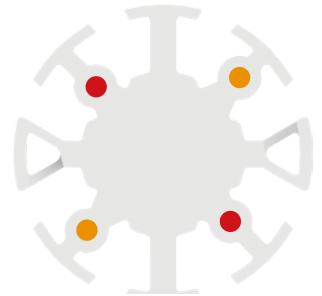
Mounting Instructions



Bridgelux is a leading provider of high power, cost effective and energy efficient light emitting diode (LED) solutions. Leveraging patented light source technology, Bridgelux LED Arrays replace traditional technologies (such as incandescent, halogen, fluorescent and high intensity discharge lighting) with integrated solid state light sources enabling high performance and energy-efficient products for the general lighting market.

Mounting indicator marks overview

MechaTronix recommends the use of a high thermal conductive interface between the LED module and the LED cooler. Either thermal grease, a thermal pad or a phase change thermal pad thickness 0.1-0.15mm is recommended. Thermal pads or phase change thermal pads can be pre-applied from MechaTronix.



Bridgelux Gen 7 V series V10 LED Array

Model names

- BXRE-xxx100x-x-7x

Mounting

- With Zhaga Book 11 LED holder
 BJB spotlight connector 47.319.6060
 Ideal Industries Chip-Lok™ holder 50-2002CT
 Mounting with 2 screws M3 x 6mm
 Orange indicator marks



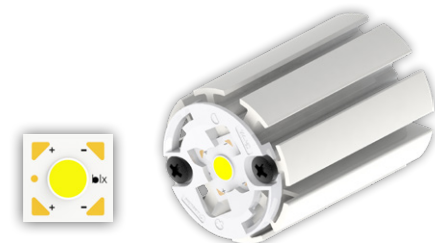
Bridgelux Gen 7 V series V13 LED Array

Model names

- BXRE-xxx200x-x-7x

Mounting

- With Zhaga Book 11 LED holder
 BJB spotlight connector 47.319.6024
 Mounting with 2 screws M3 x 6mm
 Orange indicator marks



Bridgelux Gen 7 V series V4 HD LED Array

Model names

- BXRH-xxx060x-A-73

Mounting

- With LED holder
 Ledlink LED connector LL01A00xxxB2
 Mounting with 2 screws M3 x 6mm
 Red indicator marks



Bridgelux Gen 7 V series V6 HD LED Array

Model names

- BXRH-xxx100x-B-73

Mounting

- With Zhaga Book 11 LED holder
 Bender+Wirth LED holder 464 Typ 1
 TE Connectivity Lumawise type Z35 2213678-5
 Mounting with 2 screws M3 x 6mm
 Orange indicator marks