

CoolBlock® LX-01-2x6 Seoul Semiconductor Rectangle Pin Fin LED Cooler

Mounting Instructions

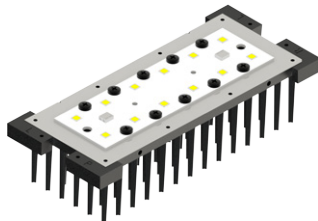
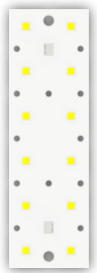
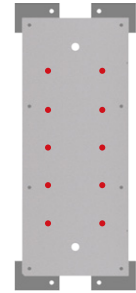


SEOUL SEMICONDUCTOR

The new Seoul Semiconductor 2X6 module based on White Colored surface-mount LED. Placed on a rectangle board of 146.6x45mm. Featured with high intensity output and high luminance. Available with 3000K & 4000K color temperature.

Mounting indicator marks overview

MechaTronix recommends the use of a high thermal conductive interface between the LED module and the LED cooler. Either thermal grease, a thermal pad or a phase change thermal pad thickness 0.1-0.15mm is recommended. Thermal pads or phase change thermal pads can be pre-applied from MechaTronix.



Seoul Semiconductor 2x6 PCB

With 12 times the powerful Seoul Semiconductor 5.0x5.0 LED, Comes in 3000K & 4000K, flexible driving current up to 1500mA

Model names

- SMJD-3625012F-XX

Mounting

- Direct mounting with 10 screws M3 x 4mm
Red indicator marks