

W80 - L192 - H45 (mm)  
 Rth 1.09 °C/W - Power Pd 45.8W  
 MORE PRODUCT DETAILS

## CoolBlock® LX-01-2x6 Osram Cezos Rectangle Pin Fin LED Cooler

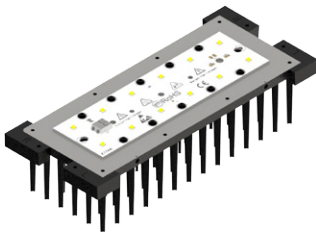
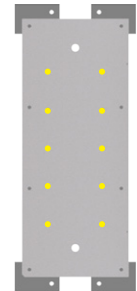
### Mounting Instructions



The 2x6 LED engines consist of 12 high power emitters placed on a rectangle board of 146.6x45mm. Typically these engines produce between 3000lm and 5000lm, depending on the chosen driving current. Lifespan for these high power engines is a perfect thermal conductivity of the carrier board.

#### Mounting indicator marks overview

MechaTronix recommends the use of a high thermal conductive interface between the LED module and the LED cooler. Either thermal grease, a thermal pad or a phase change thermal pad thickness 0.1-0.15mm is recommended. Thermal pads or phase change thermal pads can be pre-applied from MechaTronix.



#### Cezos Osram PCB's

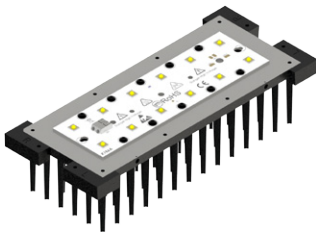
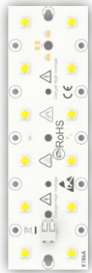
With 12 times the powerful Osram OSRAM OSRON® – CSSRM2.PM LED on a high end carrier MCPCB. Comes in a wide variety of CCT colors, flexible driving current up to 1400mA.

##### Model names

- I0-145044-xxx-c1800-k174

##### Mounting

- Direct mounting with 10 screws M3 x 4mm  
 Yellow indicator marks



#### Cezos Osram PCB's

With 12 times the powerful Osram DURIS® S8 – GWP9LM31 LED on a high end carrier MCPCB. Comes in a wide variety of CCT colors, flexible driving current up to 350mA.

##### Model names

- I0-145044-xxx-c0400-k186

##### Mounting

- Direct mounting with 10 screws M3 x 4mm  
 Yellow indicator marks