

W80 - L192 - H45 (mm)
 Rth 1.09 °C/W - Power Pd 45.8W
 MORE PRODUCT DETAILS

CoolBlock® LX-01-2x6 Lumileds Rectangle Pin Fin LED Cooler

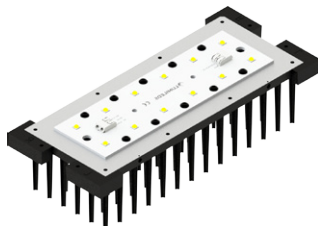
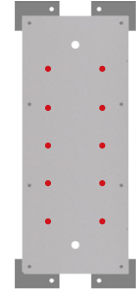
Mounting Instructions



The 2x6 LED engines consist of 12 high power emitters placed on a rectangle board of 146.6x45mm. Typically these engines produce between 3000lm and 5000lm, depending on the chosen driving current. Lifespan for these high power engines is a perfect thermal conductivity of the carrier board.

Mounting indicator marks overview

MechaTronix recommends the use of a high thermal conductive interface between the LED module and the LED cooler. Either thermal grease, a thermal pad or a phase change thermal pad thickness 0.1-0.15mm is recommended. Thermal pads or phase change thermal pads can be pre-applied from MechaTronix.



Lumileds Luxeon XR-TX

With 12 times the powerful Luxeon TX on a high end carrier MCPCB, the Luxeon XR-TX is a state of the art 2x6 module. Comes in a wide variety of CCT colors, flexible driving current up to 1050mA.

Model names

- L2T0-xxx012M00000

Mounting

- Direct mounting with 10 screws M3 x 4mm
- Red indicator marks