

## CoolBlock® ARENA-48 Square Pin Fin LED Cooler

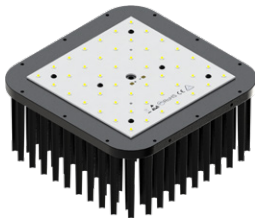
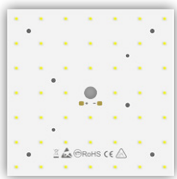
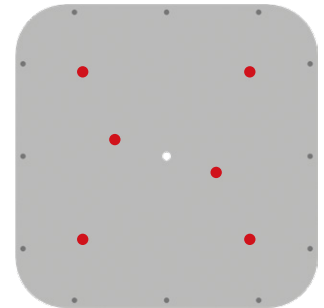
### Mounting Instructions



The Cezos designed high power LED engines consist of 48 emitters on a square board of 135 x 135mm. The light engines available for mono and multi-channels up to max 4 channels. Typically these engines produce between 6000lm and 18,000lm depending on the chosen driving current. The 4 channel LED board is also available for horticulture application (GrowEmity 48-K324) equipped with OSRAM Hyper Red, White, Deep Blue & Far Red emitters.

#### Mounting indicator marks overview

MechaTronix recommends the use of a high thermal conductive interface between the LED module and the LED cooler. Either thermal grease, a thermal pad or a phase change thermal pad thickness 0.1-0.15mm is recommended. Thermal pads or phase change thermal pads can be pre-applied from MechaTronix.



#### Cezos Osram OSLOM 48 LEDs PCB

##### Model names

- Q0-135135-xxx-Cxxxx-K319
- Q0-135135-xxx-Cxxxx-K321-W1
- Q0-135135-xxx-Cxxxx-K322-W1
- Q0-135135-xxx-Cxxxx-K323-W1
- Q0-135135-xxx-Cxxxx-K321-W2
- Q0-135135-xxx-Cxxxx-K322-W2
- Q0-135135-xxx-Cxxxx-K323-W2
- Q0-135135-xxx-Cxxxx-K324

##### Mounting

- Direct mounting with 6 screws M3 x 6mm
- Red indicator marks