

ø192 x H250 (mm)  
 Rth 0.22 °C/W  
 Power Pd 228 W

[MORE PRODUCT DETAILS](#)

## CoolBay® Tera-B Luminus Advanced High Bay LED Cooler ø192mm

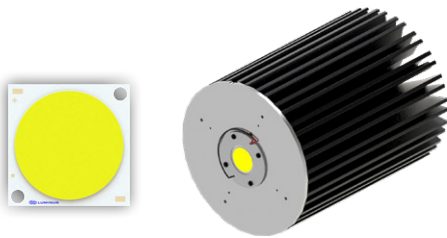
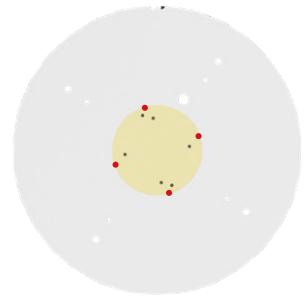
### Mounting Options



Patented, high performance Luminus LEDs are the brightest and most versatile solid state light sources available today, redefining the solid state lighting landscape by enabling the adoption of LED technology into emerging markets. Luminus technology is used in commercial and industrial lighting fixtures, theatrical lighting, projectors, signs, medical equipment, UV curing... just about anywhere a bright, efficient, reliable, long-life light source is needed.

#### Mounting indicator marks overview

MechaTronix recommends the use of a high thermal conductive interface between the LED module and the LED cooler. Either thermal grease, a thermal pad or a phase change thermal pad thickness 0.1-0.15mm is recommended. Thermal pads or phase change thermal pads can be pre-applied from MechaTronix.



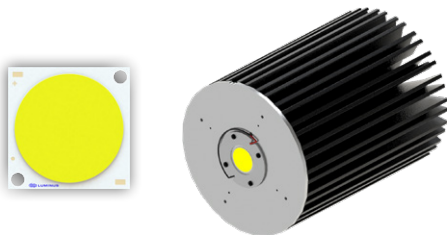
#### Luminus Gen 4 COB Array

##### Model names

- CXM-32

##### Mounting

- With LED holder  
 CoolConnect® holder COB 38x38 ( Co-development LED holder with Bender+Wirth )  
 Mounting with 4 screws M3 x 6mm  
 Red indicator marks



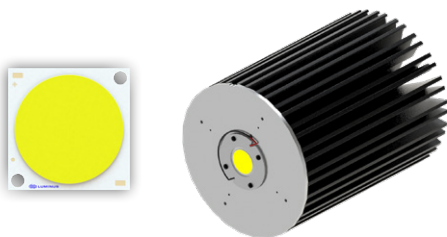
#### Luminus Gen 3 COB Array

##### Model names

- CXM-32 (AC)

##### Mounting

- With LED holder  
 CoolConnect® holder COB 38x38 ( Co-development LED holder with Bender+Wirth )  
 Mounting with 4 screws M3 x 6mm  
 Red indicator marks



#### Luminus Studio COB Gen 4

##### Model names

- CVM-32

##### Mounting

- With LED holder  
 CoolConnect® holder COB 38x38 ( Co-development LED holder with Bender+Wirth )  
 Mounting with 4 screws M3 x 6mm  
 Red indicator marks