

ø152 x H200 (mm)
Rth 0.34 °C/W
Power Pd 150 W

[MORE PRODUCT DETAILS](#)

CoolBay® Giga Meanwell Advanced High Bay LED Cooler ø152mm

Mounting Options



The Mean Well HBG LED drivers are specifically developed for mid bay and high bay applications. The round shape of the HBG LED drivers gives an ergonomic fitting with the ModuLED high bay cooler. Thermally this driver is specific designed to sit on top of a LED cooler, with the critical components thermally coupled to the top of the driver so free air convection can be optimal. In combination with the MechaTronix ModuLED Mega HBG this makes your ideal LED engine up to 10,000 lumen.

Mounting indicator marks overview

Keep in mind to keep a gap at least 10mm between the LED cooler and the driver to allow free air convection - this can be obtained with spacers or with the MTX dedicated mounting options.



MEAN WELL HBG-160 series LED driver

Model Names

- HBG-160-24
- HBG-160-36
- HBG-160-48
- HBG-160-60

Driver mounting

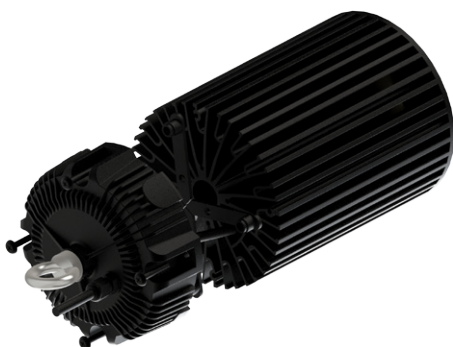
- Direct mounting with 4 spacers + (4x) M5 screws
keep minimal 10mm gap between the LED cooler
Blue indicator marks
- With Connector set for HBG-160 + (4x) M5 x 20mm screws
Blue indicator marks

Model Names

- Connector set for HBG-160

Connector set mounting

- Direct mounting on the LED cooler with 4 screws M5 x 12mm
Orange indicator marks



MEAN WELL HBG-200 series LED driver

Model Names

- HBG-200-36
- HBG-200-48
- HBG-200-60

Driver mounting

- Direct mounting with 4 spacers + (4x) M5 screws
keep minimal 10mm gap between the LED cooler
Blue indicator marks
- With Connector set for HBG-160 + (4x) M5 x 20mm screws
Blue indicator marks

Model Names

- Connector set for HBG-160

Connector set mounting

- Direct mounting on the LED cooler with 4 screws M5 x 12mm
Orange indicator marks