

ø152 x H200 (mm)
Rth 0.34 °C/W
Power Pd 150 W

[MORE PRODUCT DETAILS](#)

CoolBay® Giga-A Zhaga Advanced High Bay LED Cooler ø152mm

Mounting Options

The CoolBay® Giga high performance passive LED coolers are standard foreseen from a variety of mounting holes which allow direct mounting of LED engines, COB's, reflectors, lenses and drivers on the LED heat sink.

In this way mechanical afterwork and related costs can be avoided, and lighting designers can standardize their designs on a limited number of LED coolers.

Below you find an overview of standard LED modules, COB's and accessories which standard fit on the CoolBay® Giga LED cooler.

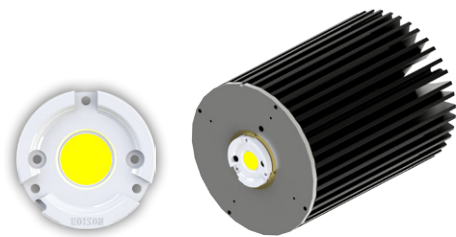
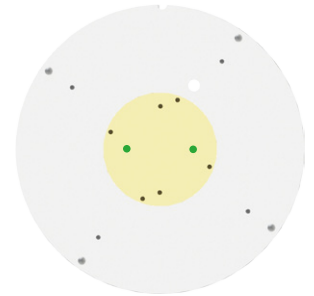
For further mechanical modifications please contact MechaTronix.

Zhaga

The Zhaga Consortium is developing specifications that enable the interchangeability of LED light sources made by multiple different manufactures. The Zhaga specifications, known as Books, describe the interfaces between LED luminaires and LED light engines. Zhaga's members include hundreds of companies from throughout the global lighting industry. The cooperation is governed by a consortium agreement that defines rules regarding confidentiality, intellectual property and decision making.

Mounting indicator marks overview

MechaTronix recommends the use of a high thermal conductive interface between the LED module and the LED cooler. Either thermal grease, a thermal pad or a phase change thermal pad thickness 0.1-0.15mm is recommended. Thermal pads or phase change thermal pads can be pre-applied from MechaTronix.



Zhaga Book 3 Spot Light Modules

Zhaga Interface Specification Book 3 defines the interfaces of a type-D LED light engine (non-socketable LED module with separate electronic control gear). The LED light engine LLE has a round disc shape with a maximum height of 7.2 mm and a typical diameter of 50 mm. It is suitable for spot-lighting and other applications that benefit from a small, circular source. Book 3 specifies a circular light-emitting surface (LES) that can have a range of diameters, namely 9 mm, 13.5 mm, 19 mm and 23 mm.

Zhaga book 3 compliant LED Spot Light modules

- Edison Edilex SLM

Zhaga Book 3 mounting through the use of LED holders and connectors

With the use of Zhaga Book 3 mechanical compatible LED holders, a wide variety of LED COB's can be mounted in the same way on these LED coolers.

Zhaga Book 3 compatible LED holders can be found from BJB, TE Connectivity (Tyco), Molex and Ideal Industries.

LED COB's for which Zhaga book 3 LED holders are available

- Citizen CitiLED CLU044, CLU046
- Cree XLamp CXA / CXB 25xx, 30xx
- Edison Opto HM40
- Lextar Nimbus 5000
- LG Innotek LEMWM28 (40W)
- Lumileds Luxeon 1208, 1211 and 1216
- Lustrous Lustron LL630F, LL630D, LL660D
- Prolight Opto PACG
- Seoul Semiconductor ZC60
- Sharp Mega Zenigata

Mounting

- Direct mounting or with Zhaga book 3 LED holder
- (2x) M3 screws
- Green indicator marks

