

ø152 x H200 (mm)
Rth 0.34 °C/W
Power Pd 150 W

[MORE PRODUCT DETAILS](#)

CoolBay® Giga-A Seoul Semiconductor Advanced High Bay LED Cooler ø152mm

Mounting Options

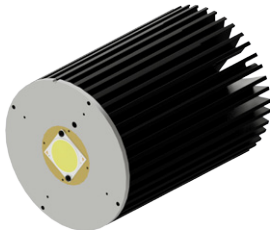
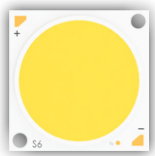
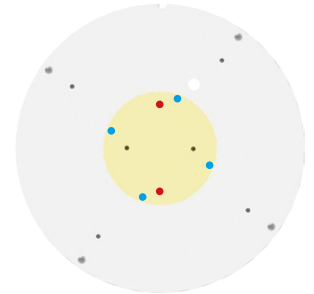


SEOUL SEMICONDUCTOR

The new Seoul Semiconductor ZC series Chip-On-Board (COB) LED Arrays offer high lumen density and efficacies of up to 140lm/W in a single, easy-to-use LED component family. Available in all major color temperatures from 2700K up to 6000K, these high flux packages deliver system level performance of 700 lumens to over 6,000 lumens. The new ZC series family is available in a single 3-step MacAdam Ellipse binning, ensuring excellent color consistency with minimum CRI options of 70, and 80 combining high quality of light with high efficacy.

Mounting indicator marks overview

MechaTronix recommends the use of a high thermal conductive interface between the LED module and the LED cooler. Either thermal grease, a thermal pad or a phase change thermal pad thickness 0.1-0.15mm is recommended. Thermal pads or phase change thermal pads can be pre-applied from MechaTronix.



Seoul Semiconductor ZC 100 LED COB

Model names

- SDW07F1C
- SDW87F1C
- SDW97F1C

Mounting

- Direct mounting with 2 screws M3 x 4mm
Red indicator marks
- With LED holder
BJB spotlight connector 47.319.4160.50
Mounting with 4 screws M3 x 6mm
Blue indicator marks