

MechaTronix in LED

MechaTronix launches advanced LED pin fin coolers for tilted spot lights

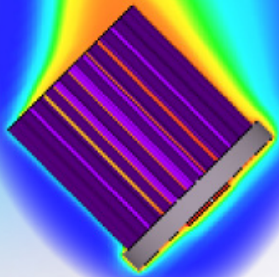
[Read news online](#)

[Request info or sample](#)

[Visit our website](#)

With the advantage of pin fin LED coolers under tilted position, MechaTronix announces 2 more diameters as standard available. This second generation pin fin coolers is developed for an optimized free air convection under tilted positions of spot and track lights over 45 degrees. Typically under heavy inclined positioning LED coolers need a far more open structure at the side to prevent obstruction of hot raising air.

MechaTronix is keen on developing situation specific LED coolers per LED brand, and offers in this way an optimal performance which exceeds existing cooling platforms with over 30%. As an example they launch now the LPF67 and LPF86 advanced pin fin coolers. In a diameter of 67mm and 86mm, these advanced LED coolers keep respectively 3500 lumen and 4500 lumen spot and track lights on the required case and junction temperature even under a full horizontal 90 degrees positioning.



LPF3550-ZHC



LPF4768-ZHP



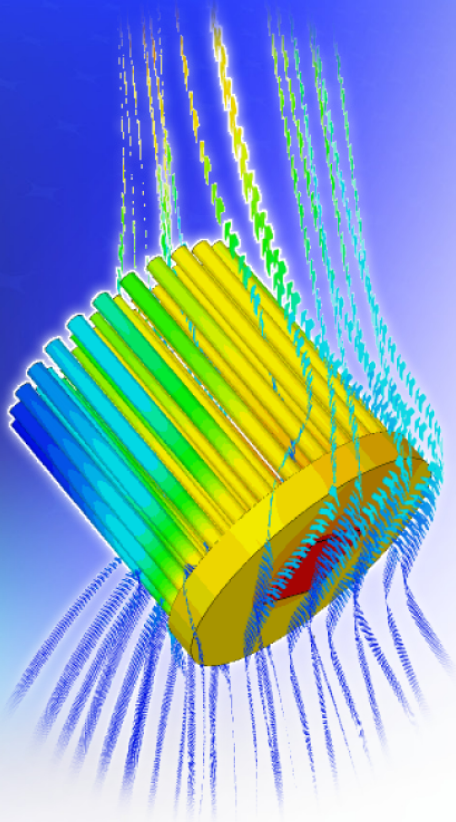
LPF6768-ZHP



LPF8668-ZHC

Model n°	LPF3550-ZHC	LPF4768-ZHP	LPF6768-ZHP	LPF8668-ZHC
Dimension (mm) ^{*1}	ø35 x h50	ø47 x h68	ø67 x h68	ø86 x h68
Volume (mm ³)	14736	31125	64026	93500
Cooling Surface (mm ²)	12436	31929	54924	68443
Weight (gr)	40	84	172	252
Thermal Resistance (°C/W) ^{*2}	7.41	3.9	2.1	1.46
Power Pd (W) ^{*3}	6.8	13	24	34
Heat Sink Material	AL1070	AL1070	AL1070	AL1070

MechaTronix in LED



The LPF47 and LPF67 advanced LED pin fin coolers are standard foreseen from Zhaga book 3 and Zhaga book 11 mounting holes, as well as an advanced pattern for direct mounting of COB LED modules. Besides better performance under tilted position the weight of these LED pin fin coolers is far lower than extruded star shaped LED coolers with similar performance. The diameter of 86mm was typically chosen during development to create a 3000 to 4500 lumen passive replacement for tilted active cooled track and spot lights from the past. A few months ago MechaTronix launched a similar diameter 86mm star shaped LED cooler, the ModuLED Micro, for similar replacement of active cooled spot and down lights under vertical position. Now with this next generation pin fin cooler it seems active cooling is completely banned in spot and down light applications.

ABOUT MECHATRONIX

MechaTronix was founded as a creative designer & manufacturer of high end mechanical plastic & metal parts. With its Asia-based headquarters in Kaohsiung Taiwan, MechaTronix became a powerhouse at designing and manufacturing heat sinks and thermal solutions for OEM and LED lighting applications. Strategic partnerships with major LED manufacturers and sharing our thermal knowledge with their luminaire designers are our core missions. Simple passive cooling, advanced heat pipe technology or active cooling solutions? MechaTronix offers of the shelf and tailored solutions to its worldwide professional customer base. For more information about the company, please visit : www.mechatronix-asia.com

No.818, Dashun 2nd Rd., Sanmin Dist., Kaohsiung City 80787, Taiwan

sales@mechatronix-asia.com www.led-heatsink.com www.mechatronix-asia.com

Tel: +886-7-381-5892 Fax: +886-7-383-9293 VAT: 28600841